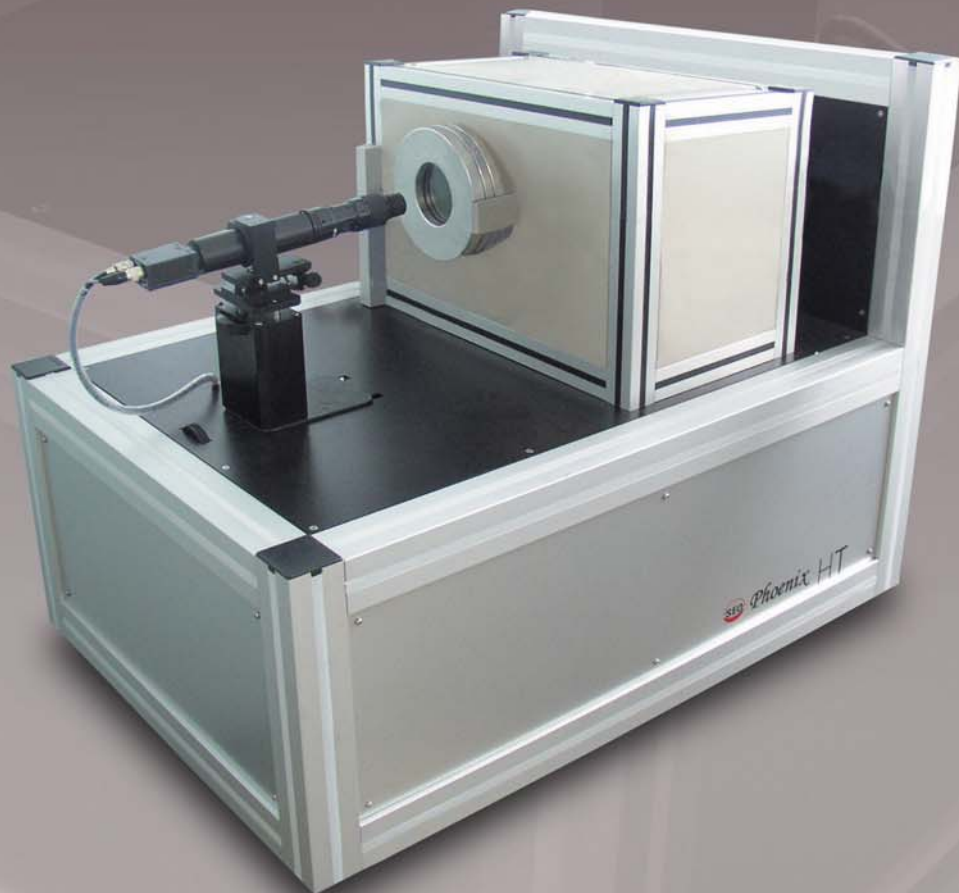


Contact Angle Analyzer

High Temperature Type Phoenix - HT



The Phoenix - HT is designed for specific applications such as adhesion of metal pastes and alloys in high temperature surroundings and can measure the contact angles at high temperature up to 1200°C or higher. The particular thermal system of the Phoenix - HT can control the inert gas or vacuum for preventing the sample from being oxidized. The easy operation and handling of this heating system would be suitable for various applications under any temperatures. The optic system is adjustable for fine image analysis and the software can analyze precisely the images.



Features

- Extremely High Temperature Measurement up to 1200°C
- High resolution CCD camera and optical system for good image analysis.
- Sequence image captures for long term analysis.
- Available to connect to Notebook or Desktop PC via USB port.
- Easy and simple operation.

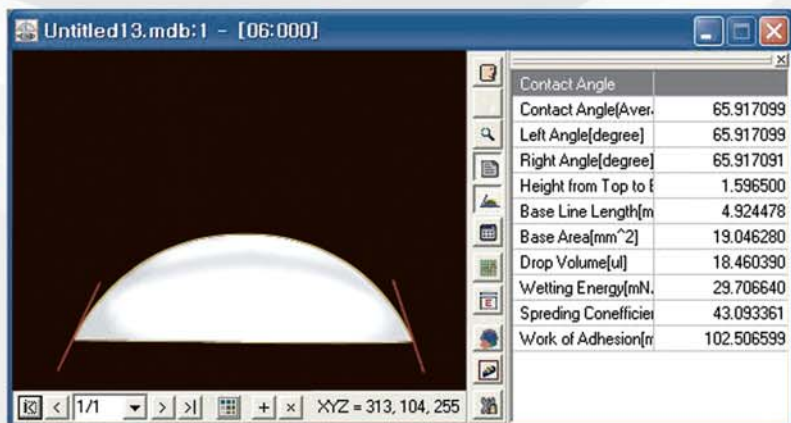
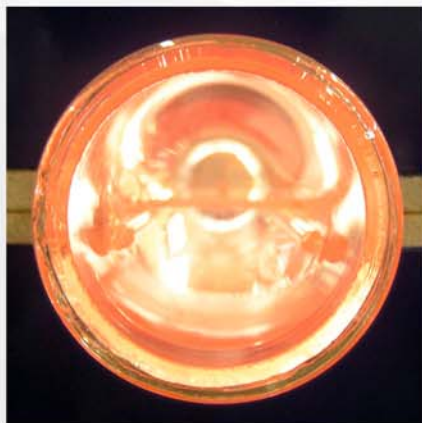
Typical Application

- Determination of the surface property at High temperature.
- Evaluation of Adhesive property of metals.

Technical Data

- | | |
|-------------------------------|--------------------------|
| • Sample size | 100 x 50 (mm) or larger |
| • Sample thickness | 50 (mm) |
| • Zoom | 6.5 folds |
| • Focus | Internal, ± 6 (mm) |
| • Contact Angle | 0~180° |
| • Accuracy | $\pm 0.1^\circ$ accuracy |
| • Temperature range or higher | 1200°C |
| • Evaluation method | Sessile Drop method |
| • Operating system | Windows XP / 2000 |

SEO reserve the right to change specifications without notice



SEO (Surface Electro Optics)

#946, Kosekdong, Suwon City,
Kyunggido, 441-813, Korea

Phone : +82.31.298.9561
Fax : +82.31.298.9565
E-mail : info@s-eo.com

www.s-eo.com